

# LIN 通用直线轴承座

标准开口直线轴承座



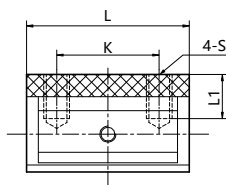
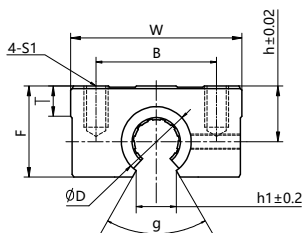
产品代码



LIN-01 GK-16



轴承内径  
开口直线轴承座  
LIN-01RK 系列直线轴承



轴 Shaft: h6-h9

产品代码 可选装标准型 LIN-01RK	自调心 可选装调心型 LIN-03RK	轴径 [mm <sup>2</sup> ]	尺寸 [mm]										
			h	W	L	F	h1	θ	B	C	S	L1	T
LIN-01GK-10	LIN-03GK-10	φ10	15	36	32	24	6	80°	25	20	M5	10	7
LIN-01GK-12	LIN-03GK-12	φ12	17	40	39	27.6	8.5	80°	28	26	M5	10	8
LIN-01GK-16	LIN-03GK-16	φ16	20	45	45	33	10	80°	32	30	M5	12	9
LIN-01GK-20	LIN-03GK-20	φ20	23	48	50	39	10	60°	35	35	M6	12	11
LIN-01GK-25	LIN-03GK-25	φ25	27	60	65	47	11.5	50°	40	40	M6	12	14
LIN-01GK-30	LIN-03GK-30	φ30	33	70	70	56	14	50°	50	50	M8	18	15
LIN-01GK-40	LIN-03GK-40	φ40	42	90	90	72	19	50°	65	65	M10	20	20
LIN-01GK-50	LIN-03GK-50	φ50	53	120	110	92	23	50°	94	80	M10	20	25

产品代码 标准型	轴径 [mm <sup>2</sup> ]	座孔 [mm <sup>2</sup> H7]	公差 [mm <sup>2</sup> ]	极限动载荷 P=5MPa[N]	极限静载荷 P=35MPa[N]	重量 [g]
LIN-01GK-10	10	19	+0.030/+0.088	870	6090	45
LIN-01GK-12	12	22	+0.030/+0.088	1152	8064	82
LIN-01GK-16	16	26	+0.030/+0.088	1728	12096	125
LIN-01GK-20	20	32	+0.030/+0.091	2700	18900	159
LIN-01GK-25	25	40	+0.030/+0.091	4350	30650	343
LIN-01GK-30	30	47	+0.040/+0.110	6120	42840	450
LIN-01GK-40	40	62	+0.040/+0.115	9600	67200	790
LIN-01GK-50	50	75	+0.040/+0.130	15000	105000	1500